



300 Vauxhall Bridge Road, Pimlico
London SW1V

GARTONJONES.COM



300 Vauxhall Bridge Road, Pimlico
London, SW1V

GARTON JONES.COM

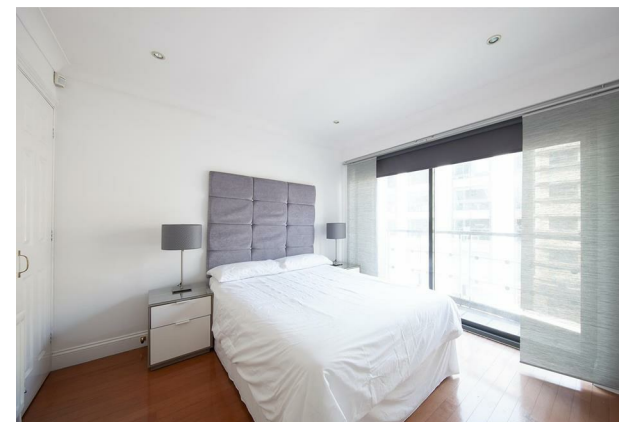
49 Marsham Street Lettings:
London +44 (0) 20 7340 0480
SW1P 3DP westminster@gartonjones.com
www.gartonjones.com

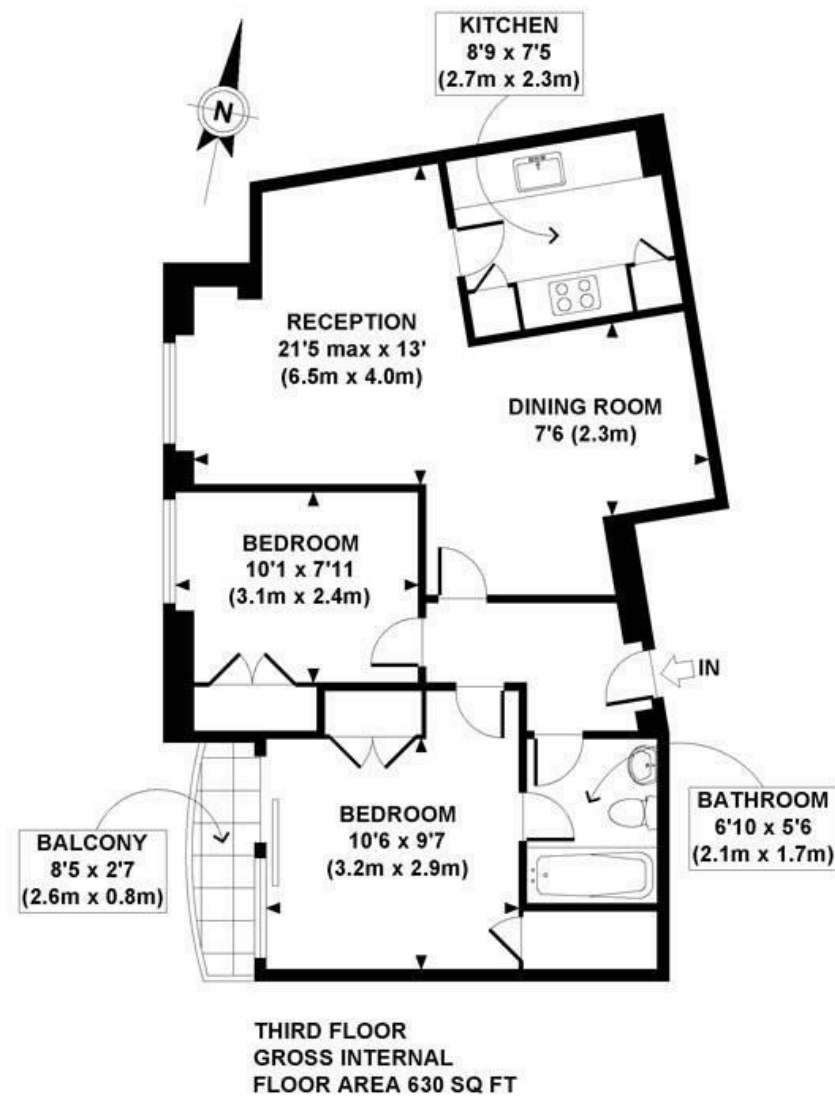
£692 Per Week

A well presented 2 double bedroom, 1 bathroom apartment of approx.630sq.ft (59sq.m) located in this popular modern development. The apartment is furnished to a high standard and benefits from wood flooring, separate kitchen, a reception with a dining area, built in wardrobes to both bedrooms and access to a private balcony from the master bedroom. 300 Vauxhall Bridge Road is exceptionally well positioned for easy access to Victoria Station. You are surrounded by an array of iconic London attractions such as Big Ben, The Houses of Parliament and 2 royal parks. You have a variety of retail stores and amenities such as a Little Waitrose, Marks & Spencer's, a Curzon Cinema and restaurants such as Aster, M Victoria, The Ivy Victoria, Flight Club Victoria and distinguished hotel establishments like The Goring, St Ermins' and St James Conrad. The property is offered furnished.

Minimum Term 6 Months
5 Weeks Deposit
Council Tax Band G (London Borough of Westminster)
EPC Rating C (76)

- 2 Double Bedroom Apartment
- 630 Square Feet (59 Sq.M)
- 3rd Floor (lift)
- Reception Room
- Separate Kitchen
- Bathroom
- Balcony
- Furnished
- Moments From The Transport Services of Victoria Station
- Close To Many Local Amenities





APPROX. GROSS INTERNAL FLOOR AREA 630 SQ FT / 59 SQ M

